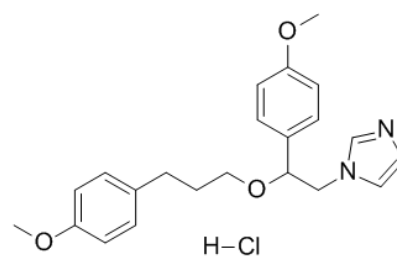


**Product Name** : SKF-96365 hydrochloride  
**Cat. No.** : PC-42017  
**CAS No.** : 130495-35-1  
**Molecular Formula** : C<sub>22</sub>H<sub>27</sub>ClN<sub>2</sub>O<sub>3</sub>  
**Molecular Weight** : 402.9144  
**Target** : TRP Channel  
**Solubility** : DMSO: ≥ 30 mg/mL



## Biological Activity

A potent inhibitor of receptor-mediated calcium entry (RMCE) with IC<sub>50</sub> of 8.5 and 11.7 μM for inhibition in platelets stimulated with ADP and thrombin, respectively; shows selectivity in blocking RMCE compared with receptor-mediated internal Ca<sup>2+</sup> release; inhibits Store-operated Ca<sup>2+</sup> entry (SOCE) and Icrac in the 20-30 μM range in several cell lines, and inhibits STIM1-mediated Ca<sup>2+</sup> influx and the nuclear translocation and activation of the NFAT transcription factor in cells expressing STIM1; also blocks TRPC, voltage gated Ca<sup>2+</sup> channel (human Cav3.1 IC<sub>50</sub>=560 nM), potassium channels.

## References

- Merritt JE, et al. *Biochem J.* 1990 Oct 15;271(2):515-22.  
Singh A, et al. *Br J Pharmacol.* 2010 Jul;160(6):1464-75.  
Várnai P, et al. *Trends Pharmacol Sci.* 2009 Mar;30(3):118-28.

**Caution: Product has not been fully validated for medical applications. Lab Use Only!**

E-mail: tech@probechem.com